



COURTNEY PHILLIPSON
 AGE • 23
 SPONSORS • LOLA & EVE, TRIGGER SNOW, ANON
 WEARWEAR • LOLA & EVE
 PANTS • NORA PANTS
 JACKETS • WICKED JACKETS
WHAT DO YOU LIKE ABOUT YOUR OUTERWEAR? IT'S A GIRL'S WHISPER BUT IT'S NOT TOO GIRLY. NOT TOO TIGHT OR ANYTHING & THE COLOURS ARE UPLIFTING SO IT'S COOL FOR GIRLS THAT DON'T WANT THE TYPICAL GIRLS OUTERWEAR.
SHOES • ANON HANDEDIES
WHAT DO YOU LIKE ABOUT YOUR BOOTS? THE HANDS ARE SMALLER SO THEY FIT MY FINGER BETTER. A THE COMPRESSION FACTOR IS SO COOL. I WEAR THESE MOST OF THE TIME. THE FIGURES ARE GOOD TOO OR SHO WEATHER DOES TO COVER UP A BIT MORE.
BOARD • LOLA, THEY MAKE REALLY HEAVY
WHAT DO YOU LIKE ABOUT YOUR BOARD? REALLY LIGHT & NO FLEXION, SO THE BEST FOR BACKS BUT YOU CAN STILL DO PROPER TURNS ON THE HILL. A CORNER WOULD BE A BITE WITHOUT LOSING AN EDGE. IT'S SO EASY TO RISE. REALLY FUN COZ IT'S NOT A BIG EFFORT.

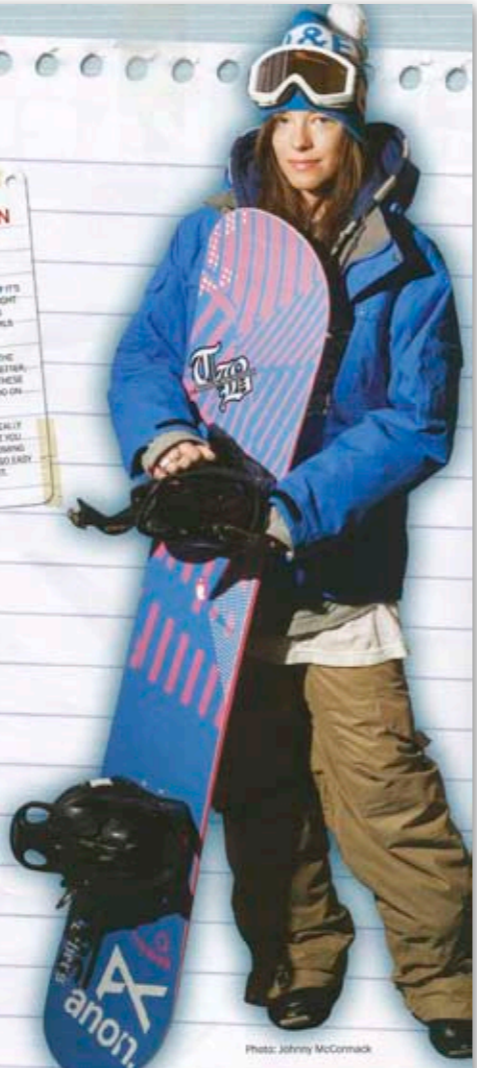


Photo: Johnny McCormack

NITRO NITRO SNOWBOARDS • 02 9533 2000 • nitr@nitrosnow.com.au

<p>KEENO L • 136L, 137, 138, 139 RRP • 799 RE • ALL MOUNTAIN NOTE • KEENO'S DESIGN FOR HIS SECOND PRO MODEL HAS COMBINED ELEMENTS OF HIS FAVOURITE BOARD, THE T2 & MIGHT. KEENO'S GRAPHICS WERE INSPIRED FROM OLD WORLD INDUSTRY SHARE GRAPHICS, A LITTLE TWISTED HUMOUR</p>	<p>NORA L • 136L, 137, 138, 139 RRP • 879 RE • ALL MOUNTAIN NOTE • NORA'S DESIGN FOR SKATING & SNOWBOARDING IS NON-STOP IMPROVED DURABILITY IN LANDING & DELIVERS POWERFUL SNAP TO ENHANCE NORA'S FLAT GROUND STYLE</p>	<p>T1 L • 136L, 136, 135, 134 RRP • 849 RE • ALL FREESTYLE NOTE • THE BEST LEVEL FROM ARCHERS TO STREET RAILS. THE T1 HAS PROVEN ITSELF TO RIDERS LIKE ERIC CHRISTENSEN, EXTREME GALEXY & FLIPPO. MATTER TO BE THEIR BOARD OF CHOICE FOR GETTING IT DONE</p>
---	--	---

OPTION RIDER SPORTS INTERNATIONAL PTY LTD • 02 9420 4002 • rsi@ridersports.com.au

<p>MORFIE L • 142L, 146L, 150L, 154L, 157L, 160L RRP • 879 RE • ALL INTERMEDIATE/DIRTY FREESTYLE NOTE • JORDAN MICHARDSON'S PRO MODEL</p>	<p>INFLUENCE L • 142L, 146L, 150L, 154L, 157L, 160L RRP • 839 RE • BEGINNER/ADVANCED ALL MOUNTAIN NOTE • THE INFLUENCE IS THE ULTIMATE BE STOK</p>	<p>PALOMA L • 142L, 146L, 150L RRP • 879 RE • ALL INTERMEDIATE/ADVANCED NOTE • THE PALOMA'S FLEX & ROCKY CUT UPS FEMALE RIDERS THE POP & RESPONSE THEY NEED TO STOK. CURVE LINES ALL DAY LONG</p>
--	--	--

PALMER SNOWBOARDS PALMER SNOWBOARDS • 02 9420 4002

<p>CROWN L • 136L, 136L, 134 RRP • 829 RE • ALL MOUNTAIN/FREERIDE NOTE • TITANIUM POWERSUP, SUPER SWIPPY & LIFTY. THIS BOARD WILL HOLD AN EDGE ON ANYTHING. PARTICULARLY FUN FOR AN EXPERIENCED RIDER & THE WEEKEND WARRIOR WILL FALL FOR IT</p>	<p>CENTRIC L • 136L, 136L, 132 RRP • 849 RE • ALL MOUNTAIN/FREERIDE NOTE • THIS IS PALMER'S PROFF PROHENSIVE FULL SIDEWALL CONSTRUCTION BOARD. FOR THE RIDER WHO FEELS THE NEED FOR FULL SIDEWALL CONSTRUCTION, THE CENTRIC HAS THE POWER TO DO ANYTHING ON THE MOUNTAIN</p>	<p>BLISS L • 134L, 134L, 132L, 132L RRP • 839 RE • ALL MOUNTAIN/FREESTYLE NOTE • LIGHTWEIGHT FOR FAST UPS. SNAPPY FOR EASY LANDING & PLANK FOR UNLIMITED JIBBING. THE BLISS IS THE TOOL THAT ALLOWS RIDERS TO CONSISTENTLY HANGAR their STYLE</p>
---	---	--



AUSTRALIAN NEW ZEALAND SNOWBOARDING MAGAZINE

Issue No. 2, 2007

